

# HOME SWEET (TINY) HOME

## MEET THE COUNTRYSIDE



Meet the Countryside, a rustic tiny home! Our largest tiny home yet, the Countryside is built on a steel trailer with radial tires, safety brakes, and stabilizing jacks. It's exterior features a reclaimed wood-look.

Among the key features of this rustic space are the extra storage space, bamboo flooring, and permanent staircase. The kitchen features a butcher block countertop, raised bar for cooking and dining, an ENERGY STAR refrigerator and induction cook-top, and a distinctive bathroom with a vanity.

Whether you are buying this home for your countryside travels or plan to live in it full-time, this exclusive tiny home will bring you comfort as well as adventures!



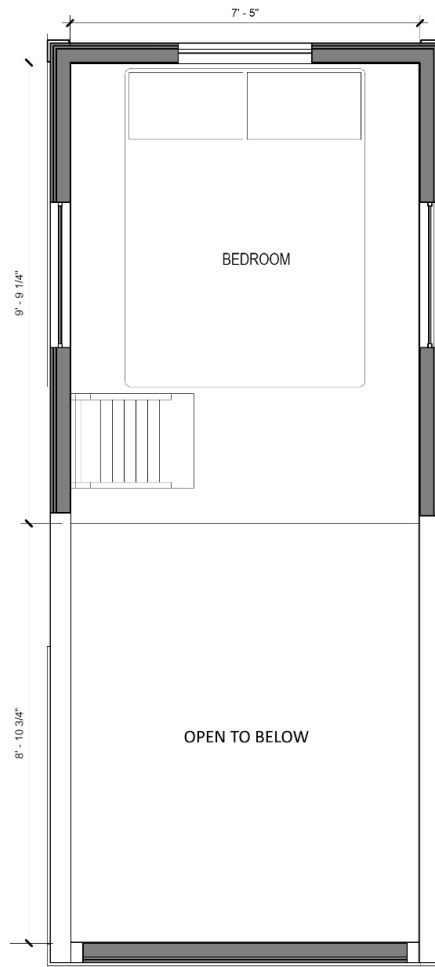
# The Countryside

**Pricing:**

Trailer, plans: **\$6,884**  
 Shell, trailer, plans: **\$31,884**  
 Fully outfitted: **\$79,884**



**MAIN FLOOR PLAN**



**LOFT FLOOR PLAN**



Dimensions shown are approximate. Specifications subject to change without notice. Tax and delivery additional cost.



## Countryside features

### Specifications

- 203 sq. ft. living space
- 150 sq. ft. main
- 53 sq.ft. loft
- 1 bedroom in loft
- 1 bath
- Exterior 8'-3"x23'-3"
- Storage 8'-0"x3'-6"

### Interior amenities

- Upstairs loft bedroom with full-sized bed, windows and lighting.
- Bamboo floor
- Front storage compartments
- Closet
- Energy saving LED lighting
- Smoke/CO<sup>2</sup> detector
- Fire extinguisher
- U/L approved devices and wiring
- USB outlets
- Ceiling fan with light
- Dual-split HVAC system
- 36 gallon freshwater tank
- Tankless Energy Star water heater
- Day bed with storage

### Kitchen

- Butcher block countertop
- Raised butcher block bar for dining and working
- Energy Star refrigerator
- Stainless Steel sink
- Smooth surface induction cooktop
- Designer Faucet
- 2 upper cabinets

### Bath

- Composting toilet
- Full-sized shower
- Vanity

### Exterior features

- OSB wall & roof sheathing
- Cedar lap siding
- Low-E vinyl windows
- Composite fiberglass roof.
- 2"x4" wall framing
- R-13 floor insulation
- Wall & ceiling insulation
- House wrap
- Insulated entrance door with blinds between glass
- Exterior lockset & deadbolt
- GFI receptacle
- Freshwater inlet
- 50 amp electrical hook-up
- LED security light
- Front porch with composite decking

### Trailer specifications

- Custom steel trailer
- Size without tongue 101"x20'
- 14,000 lb. capacity
- Steel floor joists
- Aluminum rodent resistant decking
- Steel-belted radial tires
- Safety brakes
- Four stabilizing jacks

Dimensions shown are approximate. Specifications subject to change without notice. Tax and delivery additional cost.